

PEACH AND NECTARINE FRUIT CHARACTERIZATION FOR SEVERAL NEW CULTIVARS GROWN IN THE BUCHAREST AREA

Alexandru BUCUR¹, Ana Cornelia BUTCARU², Cosmin Alexandru MIHAI¹,
Florin STĂNICĂ^{1,2}

¹Faculty of Horticulture, University of Agronomic Sciences and Veterinary Medicine of Bucharest,
59 Marasti Blvd, District 1, Bucharest, Romania

²Research Centre for Study of Food and Agricultural Products Quality, University of Agronomic
Sciences and Veterinary Medicine of Bucharest, 59 Mărăști Blvd, District 1, Bucharest, Romania

Corresponding author email: anabutcaru@gmail.com

Abstract

Fruit physicochemical parameters are essential for evaluating the new cultivars when tested in new planting conditions. The article presents the fruit's biochemical characteristics during four-year research (2019-2022) for 30 peach and nectarine cultivars. The orchard was established in 2017 in the Experimental Field of the Faculty of Horticulture in Bucharest with Romanian and foreign cultivars grafted on Myrobalan 29C, Saint Julien A, Adesoto, and GF677 rootstocks. Vertical Axis and Trident were used as planting systems, and an integrated orchard technology was applied. The size, average weight, flesh firmness, soluble solids, dry matter, titratable acidity, fructose and glucose content, and absorbance index were measured/determined for fruit evaluation. The results present the range intervals for all monitored parameters and the distribution of the cultivars on clusters depending on the physical and biochemical parameters. At the same time, the rootstock and system planting influence on the fruit parameters are highlighted.

Key words: total soluble solids, dry matter, total acidity, DA-meter.

INTRODUCTION

The Rosaceae family includes the peach (*Prunus persica* (L.) Batsch) and the nectarine (*Prunus persica* var. *nectarine* Maxim). Due to the fruit's simple adaptability to many ecological situations, early fruit set, and lengthy harvest time, peaches are widely planted. Low winter temperatures and late spring frost at higher elevations limit peaches and nectarines (Kuden et al., 2018). According to FAO data, in 2021, the top-producing nations of peaches and nectarines worldwide were China (8,850,345 tons), Italy (1,466,753 tons), Spain (1,221,698 tons), the United States (1,137,075 tons), Greece (795,851 tons), and Turkiye (555,825 tons). Peach and nectarine production holds a significant global position with a planted area of roughly 1.5 million hectares. Fruit quality in peaches and nectarines is primarily influenced by genotype. Other elements such as rootstock, the location of the fruit in the canopy, pruning and thinning techniques, and the yearly climate are also known to have an impact (Fonti i Forcada et al., 2013). Peaches and nectarines' suitability for consumption primarily depends

on their sweetness, and it has been shown that there is a positive correlation between the sugar and malic acid content of the fruits and their flavor (Orazem et al., 2011). Large-fruited nectarines became available in the 1980s, and it was expected that nectarine cultivars would eventually take over the market for fresh *P. persica* in the 21st century (Hough, 1985). Nectarines have increased in popularity over the past 20 years and currently makeup roughly 30% of all peach and nectarine types (Byrne, 2002). Consumer preferences vary depending on consumption patterns, but customers prefer fruits high in sugar yet low in acidity (Rossato et al., 2009). The sugar profile refers to the proportion of each type of sugar in a particular fruit, being quite different from the total sugar content, that is, the sum of the four most significant sugars in fruit (sucrose, glucose, fructose, and sorbitol).

The primary sugar in peach fruit is sucrose (Robertson et al., 1990). This disaccharide is crucial as a fruit flavor antioxidant, sweetener, and energy source (Huberlant & Anderson, 2003). There are also lesser amounts of other

sugars, such as glucose, fructose, and sorbitol (Moriguchi et al., 1990).

Since it is sweeter than sucrose and glucose, fructose is a significant monosaccharide in fruit flavor (Pangborn et al., 1963).

Furthermore, because it encourages the growth of bifidobacteria and lactobacilli in the gastrointestinal tract, fructose has been shown to have positive benefits on digestive health (Muir JG et al., 2009).

The present study aims to highlight the qualitative indices and biochemical attributes of 14 peach cultivars and 16 nectarine cultivars to spread the knowledge of this worldwide consumed fruit with essential functions for human health.

MATERIALS AND METHODS

The study was carried out in the experimental field of the Faculty of Horticulture in Bucharest. Both peach and nectarine cultivars were led on two different planting systems: Vertical Axis with 4.0 x 1.5 m (1,666 trees/ha - 1,666 axis/ha) and Trident with 4.0 x 2.0 m (1,250 trees/ha - 3,750 axis/ha). Integrated management, including fertilization, pest and disease management practices, and irrigation, were used to grow the trees. Tree branches were thinned to the same relative fruit: foliage ratio, simulating commercial culture.

The rootstocks were 'GF677', 'St Julien A', 'Miobolan29C', and 'Adesoto'.

Fruit quality is a broad notion that includes sensory qualities (such as appearance, texture, flavor, and aroma), nutritional value, mechanical qualities, safety, and defects (Crisosto & Costa, 2008). Together, these attributes give the fruit a degree of excellence and an economic value (Abbot, 1999).

To determine the fruit quality parameters, a collection of 30 cultivars (peach and nectarine) was evaluated between 2019 and 2022 for caliber and weight, TSS (total soluble solid), DM (dry matter), titratable acidity (TA), fructose and glucose content, absorbance index (IAD), and fruit flesh firmness.

For each cultivar, 2 or 3 trees were used, and ten fruits per cultivar were sampled in analysis. All fruits were harvested at the commercial ripe stage, when fruits softened, had a yellow or orange ground color (which was also

characteristic of each cultivar), and were simple to separate from the tree. To guarantee consistency in maturity grade, one individual only harvested them. Maturity dates ranged from mid-June to mid-September, depending on genotype. The yield (kg per tree) and total number of fruits were recorded for each cultivar. The average weight was estimated using these measurements in 20 fruits in a representative sample (Crisosto et al., 2001). The juice TSS was measured with Krüss DR301-95 refractometer, and data were given as °Brix.

The titratable acidity (TA) was measured in the fresh fruit juice. The fresh juice was measured with a pH electrode and diluted with distilled water for titration to an end pH of 8.1 with 0.1 mol L⁻¹ NaOH according to the AOAC method (AOAC, 2001). Data were given as g malic acid per 100 g fresh weight (FW) since this was the dominant organic acid in peach (Wills et al., 1983).

Flesh firmness was determined on opposite sides of the equator of each fruit with a penetrometer Turoni with an 8 mm diameter probe on ten fruits from each tree. Data averages were given in kgf cm⁻² (Harker et al., 2002).

Dry matter content in a sample was determined by weighing it before and after being incubated at 105°C in a forced air draft oven for 24 hours. The result was expressed as g dry weight (DW) g⁻¹ fresh weight (FW) (Di Vaio et al., 2015).

For the descriptive statistics of the data, Microsoft Excel 2016 and IBM SPSS v. 28.0.1.1 with a significance level of p = 0.05 were used.

RESULTS AND DISCUSSIONS

At the time of commercial harvest, high variations existed in the values of fruit diameter (Table 1), in peach and nectarine, being influenced by both genotype and canopy shape; the values obtained varied between 50-80 mm.

In nectarine, the Vertical Axis canopy imprinted higher fruit weight values in most cultivars, ranging between 64 g (Early Sun Grand/SJA) and 150 g (Honey Royal/GF677). Fruit diameters were between 55.5-68.73 mm.

Some cultivars, such as Caldessi2000/SJA_A, Nectabelle/GF677_A, and Nectagranda4/SJA_A, exhibited lower fruit diameter. These cultivars tend to produce smaller and lighter fruits, which might be preferred by consumers seeking

nectarines with smaller sizes and delicate flavor profiles. Most of the studied nectarine cultivars exhibited moderate diameter values ranging from 54 to 64, representing a balanced fruit size suitable for a wide range of consumer preferences (Table 1).

At the peach cultivars, the Trident canopy shape tended to lead to bigger fruits. Some cultivars, including Royal Summer/GF677_A, Sweet Dream/GF677_A, and Sweet Juana/GF677_A, displayed diameter values ranging between 60 and 64, being into the category of medium-sized fruits, catering to consumers seeking a balanced size and taste experience (Table 1).

Several cultivars, such as Royal Summer/GF677_T and Cardinal/M29C_T, displayed high values exceeding 65, known for producing large and heavy fruits and being visually appealing.

Royal Summer/GF677 cultivar had bigger fruits than Royal Summer/Saint Julien A on both canopy shapes. It produced more than 70% of fruit belonging to the AA category (74-81 mm), conforming to the retail group and supermarket chain standards of European markets (Kader & Mitchell, 1989).

The TSS level of peaches and nectarines showed significant differences among cultivars ranging from $8.00 \pm 16.00^\circ\text{Brix}$ (Table 1). All these TSS values were over 8°Brix , considered the minimum TSS established by the European Union to market peaches and nectarines (Commission Regulation 1861/2004). For high-acid cultivars, consumer adoption in American markets was highest when TSS > 10% to 1. In contrast, for low-acid cultivars, the degree of acceptance was at TSS 15% to 16%, above 90% (Crisosto & Crisosto, 2005). Fruit biochemical concentrations at maturity result from changes produced throughout fruit growth. Previous analyses of biochemical compound developmental alterations have mainly concentrated on commercial cultivars. According to (Chapman & Horvat, 1990) and (Chapman et al., 1991), physiological maturity for peaches was characterized by the highest sucrose and lowest quinic acid contents.

The results show a variation in the range of $^\circ\text{Brix}$ values among the studied peach and nectarine cultivars.

At nectarines, the Trident canopy registered higher values than the Vertical Axis. Cultivars

with the highest TSA values were Nectareine/M29C (14.293°Brix), Honey Late/SJA (13.44°Brix), and Big Top/GF677 (13.75°Brix). The cultivars Big Bang/GF677 (8.733°Brix) and Big Fire/GF677 (9.623°Brix) were the lowest values.

At peaches, most of the cultivars presented similar TSS values on both planting systems, the highest being at Sweet Henry/Adesoto and Sweet Juana/GF677, known for their exceptional sweetness, making them highly desirable for those who prefer intensely sweet flavors.

The lowest values were Sugar Time/Adesoto and Royal Glory/Adesoto, which may have a milder sweetness, appealing to individuals who prefer fruits with a less pronounced sweetness. Royal Summer on GF677 rootstock registered higher values for TSS than on the SJA.

According to (Moing et al., 2003), peach fruits are typically regarded as inedible when there is a high acid and extremely low sugar content. Changes in sugar and acid concentrations during fruit maturation in *P. persica* have been widely studied (Sandhu et al., 1983; Selli & Sansavini, 1995). In lower levels, sorbitol, a sugar alcohol, is the next most abundant sugar in peach fruits after sucrose, glucose, and fructose (Moriguchi et al., 1990; Robertson et al., 1990). Malic, citric, and quinic acids make up the majority of the acids found in peach fruits (Sweeney et al., 1970; Wills et al., 1983); lesser amounts of shikimic acid have also been found (Wu et al., 2002). Since these sugars and acids were found to have a significant impact on fruit flavor (Sweeney et al., 1970; Jensen, 1985; Esti et al., 1997), we searched to identify patterns between cultivars and system plantings that were linked to the quality of the final fruit.

Typically, the concentration of malic acid increased and then decreased as the fruit developed (Ishida et al., 1971; Liverani & Cangini, 1991). With fruit growth, the concentration of quinoic acid rapidly dropped. According to Chapman & Horvat (1990), quinic acid was the primary acid in young fruits, but it reduced as the fruit grew. Shikimic acid was present in peaches in small amounts (Wills et al., 1983), and (Wu et al., 2002) found that as the fruit matured, the concentration dropped.

Table 1. Caliber, firmness, and total soluble solids (°Brix) at nectarines and peaches between 2019-2022

Genotype/ Rootstock	Fruit weight (g)		Diameter (mm)		Firmness (kgfcm ⁻²)		Total soluble solids (°Brix)						
	VA	T	VA	T	VA	T	VA	T					
Nectarines													
Early Sun Grand/SJA	64.327	55.546	55.546	gn	51.766	ef	2.698	1.872	efg	9.077	d	10.518	bcd
Caldessi2000/SJA	70.085	57.562	57.562	g	54.043	de	1.848	2.428	cde	7.590	e	10.827	bcd
Nectagrاند1/SJA	73.283	54.794	54.794	n	52.312	ef	2.001	2.805	cd	9.160	d	10.510	bcd
Nectagrاند4/SJA	74.463	49.906	49.906	i	51.808	ef	2.139	1.241	efg	10.558	bc	10.573	bcd
Guerriera/SJA	81.059	63.251	63.251	bc	55.857	d	3.383	2.936	bcd	9.812	cd	10.793	bcd
Nectabelle/GF677	81.227	50.204	50.204	i	49.792	f	2.023	2.459	cde	11.930	a	10.021	bcd
Honey Late/SJA	91.565	58.686	58.686	ef	59.907	c	3.486	3.318	abc	9.830	cd	13.440	ab
Nectaross/SJA	95.167	61.611	61.611	cd	59.846	c	3.335	2.784	cd	10.587	bc	11.450	abcd
Nectareine/M29C	107.477	62.679	62.679	bc	62.490	bc	3.319	2.567	cde	11.987	a	14.293	a
Stark Red Gold/SJA	110.123	64.146	64.146	b	61.678	bc	2.449	3.761	a	10.587	bc	11.535	abcd
Big Bang/GF677	115.620	53.609	53.609	n	52.293	ef	2.958	1.761	fig	10.035	cd	8.733	d
Big Fire/GF677	116.548	55.672	55.672	gn	55.929	d	2.598	1.954	efg	9.560	cd	9.623	cd
Big Top/GF677	140.807	57.727	57.727	fg	56.535	d	2.818	3.611	ab	12.438	a	13.175	abc
Maria Anna/SJA	145.954	63.470	63.470	bc	62.786	b	2.830	2.245	cde	12.840	a	11.000	abcd
Honey Royal/GF677	150.840	68.731	68.731	a	67.570	a	3.072	3.321	abcd	11.687	ab	12.030	abcd
Peaches													
Cardinal/M 29C	58.590	73.892	73.892	n	50.683	e	1.548	2.808	bcd	11.470	bc	9.830	ef
Royal Summer/SJA	119.800	109.150	109.150	f	51.080	e	2.436	2.856	bc	8.550	c	10.010	ef
Sugar Time/Adesoto	87.360	69.606	69.606	n	54.361	d	1.953	1.896	ef	8.985	c	9.215	f
Red Top/M29C	122.100	97.408	97.408	g	54.501	d	1.478	2.409	bede	10.445	c	10.113	ef
Royal Glory/Adesoto	135.117	112.817	112.817	c	58.923	c	1.896	2.346	bede	8.393	c	9.313	f
Sweet Henry/Adesoto	82.020	114.400	114.400	ef	59.822	e	2.180	1.948	cddefg	13.880	bc	15.500	a
Sweet Juana/GF677	114.808	115.127	115.127	ef	60.794	bc	2.721	2.944	abcd	16.258	a	13.060	b
Royal Jim/Adesoto	109.865	117.474	117.474	ef	60.837	bc	2.601	2.944	bcde	11.583	bc	11.248	d
Lucius/GF677	116.694	122.668	122.668	de	61.196	bc	3.416	4.055	a	11.878	bc	13.123	b
Royal Majestic/Adesoto	124.907	88.440	88.440	g	61.924	bc	2.723	3.230	b	10.037	c	9.538	ef
Sweet Ivan/GF677	138.978	136.640	136.640	bc	63.106	b	2.690	2.618	bede	12.000	bc	11.583	cb
Sweet Dream/GF677	146.375	130.193	130.193	cd	63.430	b	2.796	2.301	cde	10.535	c	10.671	de
Royal Summer/GF677	115.190	232.212	232.212	a	63.927	b	3.253	3.100	bc	16.630	a	11.537	cb
Nabby/GF677	117.380	139.114	139.114	bc	66.751	a	2.674	2.641	bede	9.193	c	9.660	ef
Gladys/GF677	163.443	144.870	144.870	b	66.842	a	2.278	2.924	bc	12.434	bc	12.365	bc

*VA- Vertical Axis; T - Trident

Table 2. Dry matter, acidity, the ratio between acidity and total soluble content, and absorbance index at nectarines and peaches between 2019-2022

Genotype/ Rootstock	Dry matter (%)			Acidity (mg malic acid/100 g fw)			Acidity/TSS			Total IAD						
	VA	T	VA	VA	T	VA	VA	T	VA	T	VA	T				
Nectarines																
Early Sun Grand/SJA	10.556	ab	11.667	abcdef	0.748	a	0.637	c	0.065	bc	0.066	abc	0.213	de	0.204	f
Caldess2000/SJA	12.667	a	10.556	def	0.628	abc	0.529	cd	0.083	a	0.053	bcd	0.169	e	0.331	de
Nectagrando1/SJA	10.250	ab	10.222	ef	0.585	bc	0.532	cd	0.070	abc	0.043	cde	0.277	de	0.295	def
Nectagrando4/SJA	11.091	ab	10.889	def	0.644	abc	0.680	bc	0.063	bc	0.055	bcd	0.267	de	0.217	ef
Guerrera/SJA	9.778	b	14.083	a	0.633	abc	0.683	bc	0.064	bc	0.066	abc	0.309	cd	0.328	de
Nectabelle/GF677	12.667	a	11.125	cdef	0.266	ef	0.304	c	0.024	e	0.032	de	0.265	de	0.260	ef
Honey Late/SJA	11.900	ab	14.000	ab	0.381	def	0.333	cd	0.038	de	0.020	e	0.563	b		
Nectaross/SJA	10.625	ab	12.167	abcde	0.779	a	0.908	a	0.078	ab	0.080	a	0.257	de	0.871	a
Nectaireine/M29C	10.778	ab	12.636	abcde	0.491	cd	0.512	cde	0.038	de	0.034	de	0.388	c	0.510	c
Stark Red Gold/SJA	12.000	ab	13.000	abcd	0.671	ab	0.875	ab	0.064	bc	0.077	ab	0.737	a		
Big Bang/GF677	9.400	b	9.400	f	0.374	def	0.599	c	0.042	d	0.069	ab	0.312	cd	0.285	def
Big Fire/GF677	10.222	ab	11.375	cdef	0.638	abc	0.665	bc	0.068	abc	0.071	ab	0.187	c	0.189	f
Big Top/GF677	11.083	ab	12.500	abcde	0.429	de	0.501	cde	0.037	de	0.043	cde	0.272	de	0.319	de
Maria Anna/SJA	11.800	ab	11.333	cdef	0.725	ab	0.729	abc	0.058	c	0.065	abc	0.214	de	0.231	ef
Honey Royal/GF677	11.909	ab	13.700	abc	0.285	ef	0.618	c	0.026	de	0.056	abcd	0.388	c	0.374	d
Peaches																
Cardinal/M 29C	11.333	bce	10.571	cdef	2.473	a	0.669	a			0.063	bc			0.387	bc
Royal Summer/SJA	11.833	a	10.667	cde	0.477	b	0.237	c	0.056	c	0.022	b	0.383	dec	0.291	cd
Sugar Time/Adesoto	9.833	cd	9.286	ef	1.188	b	0.276	c	0.023	c	0.034	bc	0.230	ce	0.365	bcd
Red Top/M29C	7.333	d	10.756	bode	0.398	b	0.359	bc	0.266	a	0.041	bc	0.200	e	0.296	cd
Royal Glory/Adesoto	9.889	cd	10.126	def	0.266	b	0.225	c	0.080	bc	0.036	bc	0.602	ab	0.415	bc
Sweet Henry/Adesoto	14.273	b	13.017	abcd	1.013	b	0.670	a	0.062	c	0.043	bc	0.439	bc	0.300	cd
Sweet Juana/GF677	14.000	bc	13.657	ab	0.718	b	0.315	bc	0.031	c	0.018	b	0.419	bed	0.605	a
Royal Jim/Adesoto	11.083	bcd	11.487	abcde	1.040	b	0.501	ab	0.211	ab	0.116	ab	0.674	a	0.597	a
Lucius/GF677	14.000	bc	14.253	a	0.919	b	0.156	c	0.053	c	0.012	b	0.468	bc	0.597	a
Royal Majestic/Adesoto	10.556	bcd	9.333	ef	1.111	b	0.618	a	0.108	bc	0.061	bc	0.420	bed	0.453	abc
Sweet Ivan/GF677	11.769	bc	13.749	a	0.418	b	0.152	c	0.028	c	0.016	b	0.466	bc	0.514	ab
Sweet Dream/GF677	11.667	bc	9.314	ef	0.245	b	0.343	bc	0.146	abc	0.170	a	0.462	bc	0.315	cd
Royal Summer/GF677	11.833	bc	13.167	abc	0.357	b	0.288	bc	0.029	c	0.191	a	0.416	bed	0.329	cd
Nabby/GF677	10.667	bcd	10.398	cdef	0.950	b	0.378	bc	0.028	c	0.038	bc	0.410	bed	0.476	abc
Gladys/GF677	14.000	bc	13.003	abcd	0.714	b	0.604	a	0.138	abc	0.040	bc	0.548	abc	0.401	bc

*VA- Vertical Axis; T - Trident

The significant differences in several sugar traits observed between the cultivars confirmed the effect of sugar composition on the sensory quality of peach fruit (Colaric et al., 2005).

Conversely, their high acidity often favored yellow-fleshed peach and nectarine cultivars in Europe and America. As shown, sugar and acidity varied considerably for both white and yellow-fleshed peaches and nectarines (Day et al., 1997)

In the history of peach and nectarine breeding, fruit total acidity was a quality parameter that suffered changes in the newest cultivars.

In our collection, low acidity nectarines were Nectabelle/GF677, Honey Late/SJA, and Big Bang/GF677, and peaches were Royal Summer/SJA, Red Top/M29C, Royal Glory/Adesoto, Sweet Ivan/GF677, Sweet Dream/GF677, and Royal Summer/GF677.

The dry matter content in nectarines and peaches, Trident, and Vertical Axis had similar values to more cultivars (Table 2). At nectarines, varied between 9.4-14.083%, these values provide insights into the characteristics and properties of these cultivars.

Cultivars registered the highest values.

Guerriera/SJA_T and Honey Late/SJA_T, and the lowest by Big Bang/GF677 and Nectagrand1/SJA.

At peaches, the highest values were at Sweet Henry/Adesoto_A, Sweet Juana/GF677_A, Lucius/GF677_A, and Gladys/GF677_A.

Absorbance index (IAD) presented the maturity level according to this parameter that was analyzed in the fruits, most of the values being under 0.4.

The 14 peach and 16 nectarine cultivars (2019-2022) were grouped after the fruit traits using hierarchical clusters (Wanpeng et al., 2017; da Silva Torres et al., 2006).

At nectarines, five groups were formed for the basic parameters (a) Big Fire/GF677_T, Caldesi 2000/SJA_t, Nectagrand1/SJA_T, Maria Anna/SJA_T, Nectareine/M29C_A, Nectarine/M29C_t, Stark Red Gold/SJA_T, Guerriera/SJA_T, and Honey Royal/GF677_T; (b) Nectaross/SJA_A, Stark Red Gold/SJA_A, Honey Late/SJA_T, Nectagrand4/SJA_T, Big Top_GF677_A, Honey Late/SJA_A, Big Bang/GF677_A, Nectagrand4/SJA_A, Nectabelle/GF677_T; (c) Big Top/GF677_T, Nectaross/SJA_T, Big Bang/GF677_T; (d) Big

Fire/GF677_A, Early Sun Grand/SJA_A, Caldesi 2000/SJA_A, Nectabelle/SJA_A, and Nectagrand1/SJA_A; (e) Maria Anna/SJA_A, Honey Royal/GF677/A, Early Sun Grand/SJA_T, and Guerriera/SJA_A (Figure 1). Nectareine/M29C and Nectagrand4/SJA presented a similar profile in both planting systems, while the others differed.

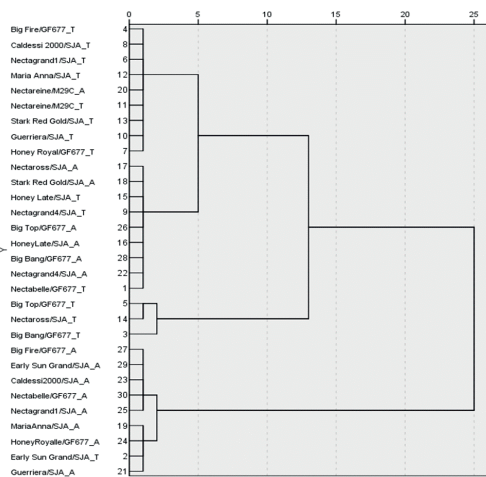


Figure 1. Nectarine cultivars grouped by fruit quality parameters

At peach, four groups were presented (a) Sweet Dream/GF677_A, Royal Glory/Adesoto_A, Royal Jim/Adesoto_T, Sweet Juana/GF677_T, Lucius/GF677_A, Red Top/M29C, Royal Majestic/Adesoto_T, Royal Jim/Adesoto_A, Royal Glory/Adesoto_T, Sweet Ivan/GF677_T, Sweet Juana/GF677_A, and Royal Summer/SJA_A; (b) Royal Summer/SJA_T, Sweet Ivan/GF677_A, Gladys/GF677_A, and Nabby/GF677_A; (c) Red Top/M29C_T, and Springbelle/M29C; (d) Sweet Henry/Adesoto_T, Sweet Henry/Adesoto_A, Gladys/GF677_T, Lucius/GF677_T, Cardinal/M29C_T, Nabby/GF677_T, Sweet dream/GF677_T, and Sugar Time/Adesoto_A; (e) Royal Majestic/Adesoto_A.

Royal Jim/Adesoto, Royal Glory/Adesoto, Sweet Juana/GF677, and Sweet Henry/Adesoto presented the same profile in both planting systems (Figure 2).

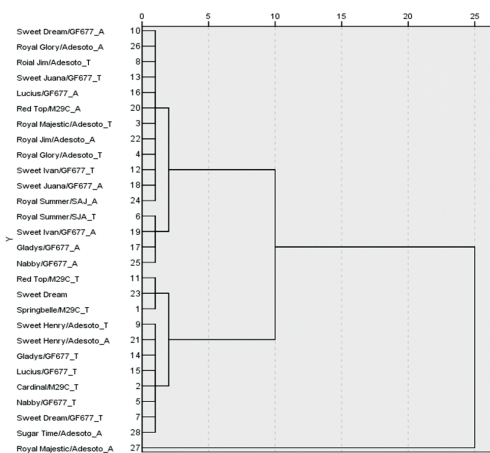


Figure 2. Peach cultivars grouped by fruit quality parameters

CONCLUSIONS

The caliber values from moderate-sized fruits suitable for various uses to larger-sized fruits with visually appealing characteristics, growers and consumers have a wide range of options to select from based on their preferences. The values were between 50-80 mm. Royal Summer/GF677 has bigger fruits than Royal Summer/Saint Julien A on both canopy shapes. Trident has bigger fruits than Vertical Axis at peach.

For total soluble solids ($^{\circ}$ Brix), the values ranged between 8-15 $^{\circ}$ Brix, highlighting a wide range of sweetness levels when cultivars exhibiting exceptional sweetness are highly appreciated. Cultivars with moderate sugar content and suitable performance could balance flavor and tree management. Further research can explore additional sensory attributes and evaluate the performance of different canopy shapes to optimize fruit production and enhance consumer satisfaction.

Dry matter content varied between 7-15%. The titratable acidity content recorded higher values on the Trident canopy in some cultivars. It is important to note that taste preferences can vary among individuals, and some may prefer fruits with higher or lower acidity levels based on personal preferences. Other factors, such as sweetness, aroma, texture, and overall fruit quality, also contribute to the appreciation of a cultivar.

When evaluating the characteristics and properties of these cultivars, it is crucial to consider a combination of factors, including titratable acidity, dry matter concentration, fruit size, and adaptability to specific growing conditions, to determine their overall desirability and suitability for different uses.

REFERENCES

- Abbot, J.A. (1999). Quality measurement of fruit and vegetables. *Postharv. Biol. Technol.* 15, 207–223.
- AOAC (1984). Official Methods of Analysis. Association of Official Analytical Chemists, Arlington, VA.
- Byrne, D.H. (2002). Peach breeding trends: a world wide perspective. *Acta Horticulturae*, 592, 49–59.
- Chapman Jr, G. W., & Horvat, R. J. (1990). Changes in nonvolatile acids, sugars, pectin and sugar composition of pectin during peach (cv. Monroe) maturation. *Journal of Agricultural and Food Chemistry*, 38(2), 383–387.
- Chapman Jr, G. W., Horvat, R. J., & Forbus Jr, W. R. (1991). Physical and chemical changes during the maturation of peaches (cv. Majestic). *Journal of Agricultural and Food Chemistry*, 39(5), 867–870.
- Colaric, M., Veberic, R., Stampar, F. & Hudina, M. (2005). Evaluation of peach and nectarine fruit quality and correlations between sensory and chemical attributes. *J Sci Food Agric* 85, 2611–2616.
- Crisosto, C.H. & Costa, G. (2008). Preharvest factors affecting peach quality. In: *Layne, D.R., Bassi, D. (Eds.), The Peach: Botany, Production and Uses*. CAB International, pp.536–549.
- Crisosto, C.H. & Crisosto, G.M. (2005). Relationship between ripe soluble solids concentration (RSSC) and consumer acceptance of high and low acid melting flesh peach and nectarine (*Prunus persica* (L.) Batsch) cultivars. *Postharv Biol Technol* 38, 239–246.
- Crisosto, C.H., Slaughter, D., Garner, D. & Boyd, J. (2001). Stone fruit critical bruising thresholds. *J Am Pomol Soc* 55, 76–81.
- da Silva Torres, E.A.F., Garbelotti, M.L., & Neto, J.M.M. (2006). The application of hierarchical clusters analysis to the study of the composition of foods. *Food chemistry*, 99(3), 622-629.
- Day, K. R., Crisosto, G. M., Crisosto, C. H. & Watkins, M. (1997). Survey of white flesh nectarines and peaches. *Good Fruit Grower*, 48, 10–2.
- Di Vaio, C., Marallo, N., Graziani, G., Ritiemi, A. & Di Matteo, A. (2015). Evaluation of fruit quality, bioactive compounds, and total antioxidant activity of flat peach cultivars. *J Sci Food Agric*.95(10), 2124–2131.
- Esti, M., Messia, cM. C., Sinesio, F., Nicotra, A., Conte, L., La Notte, E., & Palleschi, G. (1997). Quality evaluation of peaches and nectarines by electrochemical and multivariate analyses: relationships between analytical measurements and sensory attributes. *Food Chemistry*, 60(4), 659-666.
- FAO, (2023). Food Agriculture Organization. Statistical Data Base. Rome, Italy,

- <https://www.fao.org/faostat/en/#data/QCL/visualize> accessed on July 21, 2023.
- Font i Forcada, C., Gogorcena, Y. & Moreno, M.A. (2013). Fruit sugar profile and antioxidants of peach and nectarine cultivars on almond × peach hybrid rootstocks. *Scientia Horticulturae* 164, 563-572.
- Harker, F.R., Marsh, K.B., Young, H., Murray, S.H., Gunson, F.A. & Walker, S.B. (2002). Sensory interpretation of instrumental measurements. 2: Sweet and acid taste of apple fruit. *Postharv Biol Technol* 24, 241-250.
- Hough, L.F. (1985). Perspectives for peach breeding for the cultivars for 2000 AD. *Acta Horticulturae*, 173, 11-20.
- Huberlant, J. & Anderson, G.H., (2003). Sucrose, in *Encyclopaedia of Food Science, Food Technology and Nutrition*, ed. by Caballero B, Trugo LC and Finglas PM. Academic Press, London, 4431-4439.
- Ishida, M., Inaba, A., & Sobajima, Y. (1971). Seasonal changes in the concentration of sugars and organic acids in peach fruits. *Scient. Rep. Kyoto Pref. Univ. Agric*, 23, 18-23.
- Jensen, R. A. (1986). The shikimate/arogenate pathway: link between carbohydrate metabolism and secondary metabolism. *Physiologia Plantarum*, 66(1), 164-168.
- Kader, A.A. & Mitchell, F.G. (1989). Maturity and quality. In *Peaches, Plums and Nectarines: Growing and Handling for Fresh Market*; La Rue, J.H., Johnson, R.S., Eds.; University of California Department of Agriculture and Natural Resources Publication: Oakland, CA, USA, 3331, 191-196.
- Kuden, A.B., Comlekcioglu, S., Sarier, K., Imrak, B. & Kuden, A. (2018). Peach breeding studies in Turkey and the evaluation of peach and nectarine hybrids. In: *Soneji J. (editor). Breeding and Health Benefits of Fruit and Nut Crops*. London, UK: IntechOpen Limited, 315-454.
- Liverani, A. & Cangini, A. (1991). Ethylene evolution and changes in carbohydrates and organic acid during maturation of two white and two yellow-fleshed peach cultivars. *Adv. Hort. Sci.* 5, 59-63.
- Moing, A., Poëssel, J. L., Svanella-Dumas, L., Loonis, M. & Kervella, J. (2003). Biochemical basis of low fruit quality of *Prunus davidiana*, a pest and disease resistance donor for peach breeding. *Journal of the American Society for Horticultural Science*, 128, 55-62.
- Moriguchi, T., Ishizawa, Y. & Sanada, T., (1990). Differences in sugar composition in *Prunus persica* fruit and the classification by the principal component analysis. *Journal of the Japanese Society for Horticultural Science*, 59(2), 307-312.
- Muir, J.G., Rose, R., Rosella, O., Liels, K., Barrett, J.S. & Shepherd, S.J., (2009). Measurement of short-chain carbohydrates in common Australian vegetables and fruits by high-performance liquid chromatography (HPLC). *J Agric Food Chem* 57, 554-565.
- Orazem, P., Stampar, F. & Hudina, M. (2011). Quality analysis of "Redhaven" peach fruit grafted on 11 rootstocks of different genetic origin in a replant soil. *Food Chemistry* 124, 1691- 1698.
- Pangborn, R.M. (1963). Relative taste intensities of selected sugars and organic acids. *J Food Sci* 28, 726-733.
- Robertson, J.A., Horvat, R.J., Lyon, B.G., Meredith, F.I., Senter, S.D. & Okie, W.R. (1990). Comparison of quality characteristics of selected yellow-and white-fleshed peach cultivars. *Journal of Food Science*, 55(5), 1308-1311.
- Rossato, S.B., Haas, C., Raseira, M.C.B., Moreira, J.C.F. & Zuanazzi, J.A.S. (2009). Antioxidant potential of peels and flesh of peaches from different cultivars. *Journal of Medicinal Food*, 12, 1119-1126.
- Sandhu, S. S., Dhillon, B. S., & Randhawa, J. S. (1983). Chromatographic estimation of sugars from the components of developing fruits of early-and late-maturing peach cultivars. *Journal of Horticultural Science*, 58(2), 197-202.
- Selli, R., & Sansavini, S. (1993). Sugar, acid and pectin content in relation to ripening and quality of peach and nectarine fruits. In *International Symposium on Quality of Fruit and Vegetables: Influence of Pre-and Post-Harvest Factors and Technology* 379, 345-358.
- Sweeney, J. P., Chapman, V. J., & Hepner, P. A. (1970). Sugar, Acid, and Flavor in Fresh Fruits. Effect of Variety and Environmental Factors. *Journal of the American Dietetic Association*, 57(5), 432-435.
- Wanpeng, X.I., Zheng, Q., Juanfang, L.U., & Junping, Q. (2017). Comparative analysis of three types of peaches: Identification of the key individual characteristic flavor compounds by integrating consumers' acceptability with flavor quality. *Horticultural Plant Journal*, 3(1), 1-12.
- Wills, R. B., Scriven, F. M. & Greenfield, H. (1983). Nutrient composition of stone fruit (*Prunus spp.*) cultivars: apricot, cherry, nectarine, peach and plum. *Journal of the Science of Food and Agriculture*, 34(12), 1383-1389.
- Wu, B. H., Genard, M., Lescouret, F., Gomez, L., & Li, S. H. (2002). Influence of assimilate and water supply on seasonal variation of acids in peach (cv Suncrest). *Journal of the Science of Food and Agriculture*, 82(15), 1829-1836.